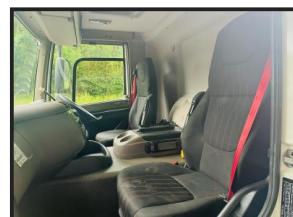
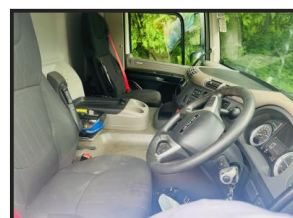




DAF CF 340 6X2 CHEESEWEDGE CRANE



£POA

DAF CF 340 2018 (18) EURO 6, 6X2 REAR LIFT AXLE, CHEESEWEDGE BEAVERTAIL, HMF 3220 REMOTE CONTROL CRANE, 3 EXTENSIONS, REMOTE WINCH, TWIST LOCKS, CAMERA SYSTEM, AUTO GEARBOX, WORK LIGHTS, TOOL BOXES, BEACONS, SENSOR SYSTEM, HILL ASSIST, DIFF LOCK, AIR SEAT, AIR CON, SUN ROOF, ELECTRIC WINDOWS / MIRRORS, 135,000 MILES.

Product Details

Product Details	
Category/Type	Beavertail Cranes
Make	DAF
Model	CF 340 6X2 CHEESEWEDGE CRANE
Year	2018
Hours	-

Colliery Lane North, Exhall, Coventry, Warwickshire, CV7 9NW

Tel: 024 7636 2592

www.geoff-sipson.co.uk office@geoff-sipson.co.uk