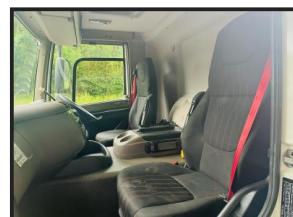
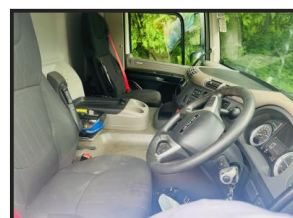




# DAF CF 340 6X2 CHEESEWEDGE CRANE



## £POA

DAF CF 340 2018 (18) EURO 6, 6X2 REAR LIFT AXLE, CHEESEWEDGE BEAVERTAIL, HMF 3220 REMOTE CONTROL CRANE, 3 EXTENSIONS, REMOTE WINCH, TWIST LOCKS, CAMERA SYSTEM, AUTO GEARBOX, WORK LIGHTS, TOOL BOXES, BEACONS, SENSOR SYSTEM, HILL ASSIST, DIFF LOCK, AIR SEAT, AIR CON, SUN ROOF, ELECTRIC WINDOWS / MIRRORS, 135,000 MILES.

### Product Details

Product Details	
<b>Category/Type</b>	<b>Cranes</b>
<b>Make</b>	<b>DAF</b>
<b>Model</b>	<b>CF 340 6X2 CHEESEWEDGE CRANE</b>
<b>Year</b>	<b>2018</b>
<b>Hours</b>	<b>-</b>

Colliery Lane North, Exhall, Coventry, Warwickshire, CV7 9NW

Tel: 024 7636 2592

[www.geoff-sipson.co.uk](http://www.geoff-sipson.co.uk) [office@geoff-sipson.co.uk](mailto:office@geoff-sipson.co.uk)