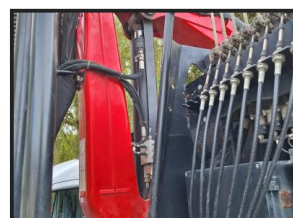




DAF LF 290 18 TON TIPPER GRAB



£POA

DAF LF 290 2020 (70) EURO 6, DAY CAB, 18 TON TIPPER GRAB, EPSILON M105L CRANE, KINSHOFER GRAB, TESTED OCT 24, 23,000 MILES ONLY.

Product Details

Category/Type	18 Ton Rigid
Make	DAF
Model	LF 290 18 TON TIPPER GRAB
Year	2020
Hours	-

Colliery Lane North, Exhall, Coventry, Warwickshire, CV7 9NW

Tel: 024 7636 2592

www.geoff-sipson.co.uk office@geoff-sipson.co.uk