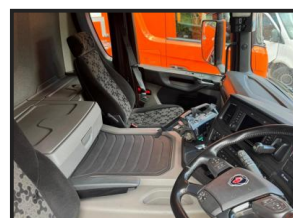




SCANIA P420 8X2 DROPSIDE BRICK GRAB



£POA

SCANIA P420 2024 EURO 6, REST CAB (NO BED), 8X2 REAR LIFT & STEER AXLE, DOUBLE DROPSIDE BULKRITE BODY, CENTRE MOUNTED HIAB X-HIDUO 118 REMOTE CONTROLLED CRANE, 2 EXTENSIONS, KINSHOFER BRICK GRAB, ALL ROUND AIR SUSPENSION, ALCOA POLISHED ALLOY WHEELS, ALUMINIUM DROPSIDES, TYING RINGS, REAR SPOT LIGHTS, AUTO LUBE, AUTO GEARBOX, CRUISE CONTROL, AIR CON, HEATED & COOLED SEATS, NAVIGATION SYSTEM, ENGINE BRAKE, HEATED MIRRORS, AIR SEAT, BLUETOOTH, SUN VISOR, ELECTRIC WINDOWS AND MIRRORS.

Product Details

| Product Details | |
|----------------------|-------------------------------------|
| Category/Type | Cranes |
| Make | SCANIA |
| Model | P420 8X2 DROPSIDE BRICK GRAB |
| Year | 2024 |
| Hours | - |

Colliery Lane North, Exhall, Coventry, Warwickshire, CV7 9NW

Tel: 024 7636 2592

www.geoff-sipson.co.uk office@geoff-sipson.co.uk